

CERTIFICATE OF ANALYSIS

Client: Myotrope Peptides Inc. • Quality Control Department • Fort Lauderdale, FL, USA • qualitycontrol@myotrope.com

SAMPLE IDENTIFICATION

Sample Name	Batch Number	Date Published	Lab Reference
BPC-157 5 mg	2026263	05/14/2026	QC-BPC157-5mg-263

RESULTS — PEPTIDE IDENTITY, CONTENT & PURITY

Parameter	Result	Unit	Uncertainty	Method / Note
BPC-157 Identification (MS)	Confirmed (993)	—	± 20	ESI-MS Spectrum
BPC-157 Assay (Content)	5.25	mg	± 0.03	HPLC External Standard
BPC-157 Identification (RT)	0.991	—	± 0.005	HPLC Retention Time
BPC-157 Purity (HPLC)	97.6	%	± 0.5	Area Normalization @ 214 nm

ADDITIONAL TESTS

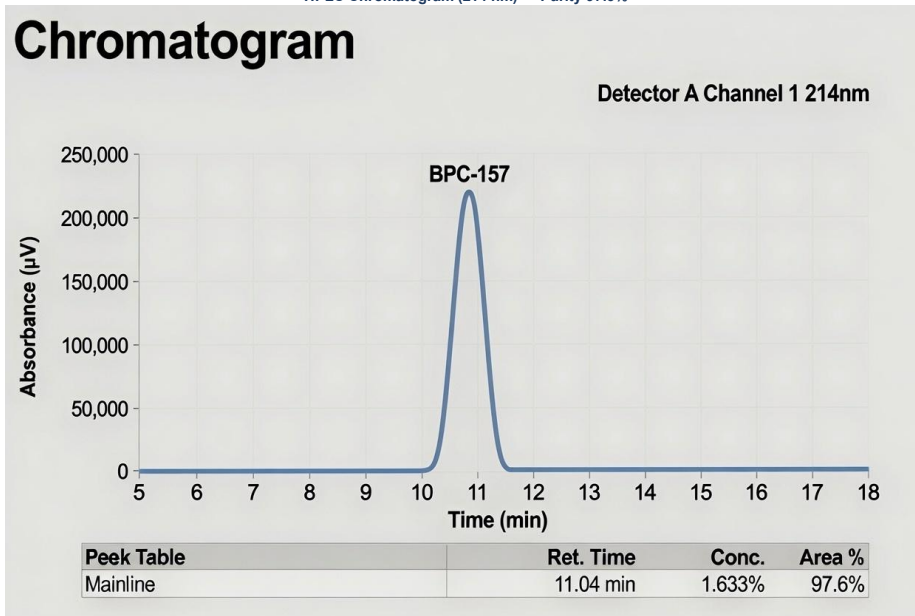
Test	Result	Unit	Limit	Method
Total Aerobic Microbial Count	Not detected	CFU/g	≥ 1000	USP <61>
Total Yeast and Mold Count	Not detected	CFU/g	≥ 100	USP <61>
Bacterial Endotoxin	< 0.001	EU/mg	> 0.5	USP <85> Chromogenic LAL
Heavy Metals (As, Cd, Pb, etc.)	Not detected	ppm	Various	Elemental Impurities Screening

CONCLUSION: All tested parameters meet the specifications. The batch is approved for research use only.

ANALYTICAL DATA — HPLC CHROMATOGRAM

The following analytical data confirm identity and purity of the BPC-157 batch.

HPLC Chromatogram (214 nm) — Purity 97.6%



METHOD SPECIFICATION — Content & Purity Assessment

Instrumentation

Module	Name	Serial Number
System Controller	SCL-10ADvp	SN-2026-0147
Degassing Unit	DGU-14A	SN-2026-0082
Pump A	LC-10ADvp	SN-2026-0075
Pump B	LC-10ADvp	SN-2026-0781
Autosampler	SIL-10ADvp	SN-2026-0514
Column Thermostat	CTO-10ACvp	SN-2026-0371
Detector	SPD-10ADvp	SN-2026-0338

Chromatographic Conditions

Parameter	Value
Eluent A	0.1% TFA in Water (HPLC, Gradient Grade)
Eluent B	0.1% TFA in Acetonitrile (HPLC, Gradient Grade)
Flow Rate	0.4 mL/min
Injection Volume	0.5 µL
Column Temperature	60°C
Column	Phenomenex Biozen Peptide Polar C18, 150×2.1 mm, 3 µm
Detection Wavelength	214 nm

MYOTROPE | Premium Research Peptides
Certificate of Analysis • BPC-157 5 mg • Research Use Only

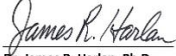
Gradient Program

Time (min)	A [%]	B [%]
1	95	5
19	40	60
20	5	95
24	5	95
25	95	5
33	end	

Sample Preparation

Whole amount of container was dissolved in 2 mL of water (HPLC, Gradient Grade). Aliquote part of 1 mL was dispensed into HPLC vial for analysis.

AUTHORIZATION & APPROVAL

Tested & Analyzed by:  QUALITY CONTROL	Approved by (QA):  Dr. James R. Harlan, Ph.D. Quality Assurance Director
---	---

DISCLAIMER: This document is for research purposes only. Not for human or veterinary use. Results relate only to the sample tested. Store at -20°C in a dry, dark place.

Myotrope — Quality & Transparency You Can Trust