

CERTIFICATE OF ANALYSIS

Client: Myotrope Peptides Inc. • Quality Control Department • Fort Lauderdale, FL, USA • qualitycontrol@myotrope.com

SAMPLE IDENTIFICATION

Sample Name	Batch Number	Date Published	Lab Reference
Bacteriostatic Water 10 ml	2026004	05/14/2026	QC-BacteriostaticWater-10ml-004

RESULTS — ACTIVE SUBSTANCE & QUALITY PARAMETERS

Parameter	Result	Unit	Uncertainty	Method / Note
Benzyl Alcohol Content	0.918	%	± 0.0009	HPLC External Standard @ 260 nm
pH Determination	6.84	—	± 0.1	Potentiometric
Bacterial Endotoxin	Not detected	EU/mL	—	USP <85> Chromogenic LAL

ADDITIONAL TESTS

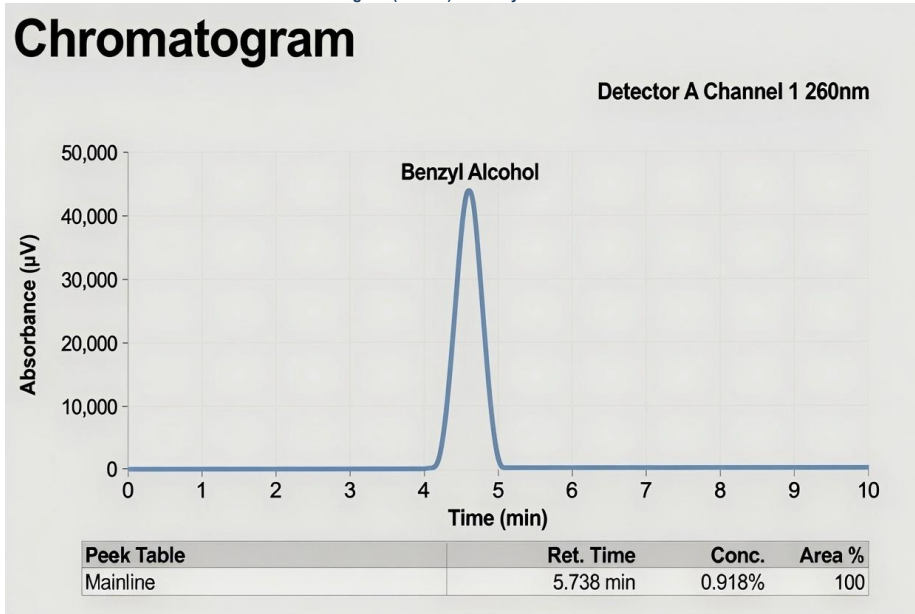
Test	Result	Unit	Limit	Method
Sterility	Not detected	—	Sterile	USP <71>

CONCLUSION: All tested parameters meet the specifications. The batch is approved for research use only.

ANALYTICAL DATA — HPLC CHROMATOGRAM

The following analytical data confirm the Benzyl Alcohol content in the batch.

HPLC Chromatogram (260 nm) — Benzyl Alcohol Content 0.918%



METHOD SPECIFICATION — Benzyl Alcohol Content Determination

Instrumentation

Module	Name	Serial Number
System Controller	SCL-10ADvp	SN-2026-0147
Degassing Unit	DGU-14A	SN-2026-0082
Pump	LC-10ADvp	SN-2026-0394
Autosampler	SIL-10ADvp	SN-2026-0514
Column Thermostat	CTO-10ACvp	SN-2026-0371
Detector	SPD-10ADvp	SN-2026-0338

Chromatographic Conditions

Parameter	Value
Eluent A	Water (HPLC, Gradient Grade)
Eluent B	Acetonitrile (HPLC, Gradient Grade)
Flow Rate	0.8 mL/min
Injection Volume	0.5 µL
Column Temperature	40°C
Column	Avantor ACE UltraCore 150×3 mm, 3.5 µm
Detection Wavelength	260 nm

MYOTROPE | Premium Research Peptides

Certificate of Analysis • Bacteriostatic Water 10 ml • Research Use Only

Gradient Program

Time (min)	A [%]	B [%]
2	95	5
10	5	95
12	5	95
12.01	95	5
15	end	

Sample Preparation

1 mL of sample was pipetted into HPLC vial. 0.5 µL of sample was injected.

AUTHORIZATION & APPROVAL

Tested & Analyzed by:


QUALITY CONTROL

Approved by (QA):


Dr. James R. Harlan, Ph.D.
Quality Assurance Director

DISCLAIMER: This document is for research purposes only. Not for human or veterinary use. Results relate only to the sample tested. Store at 2–8°C.

Myotrope — Quality & Transparency You Can Trust